

FluctuS Mother Board

FluctuS Mother Board - FL01-MB01

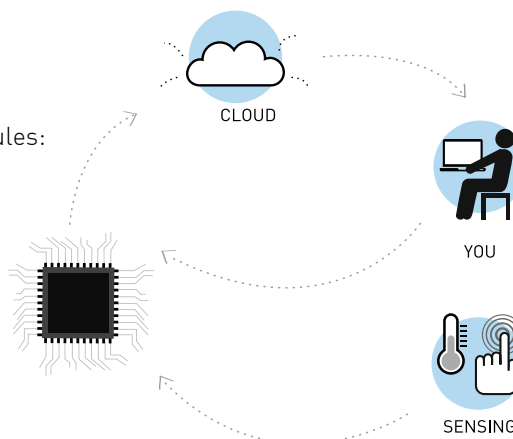








FluctuS Intelligent Sensor System allows you to create and easily manage **Wireless Sensor Networks**.

FluctuS provides a fully engineered, open hardware and open software platform for the **Internet of Things** and Smart Cities applications.

Expandable with the following modules:

- GSM/UMTS
- WiFi
- PoE
- ZigBee
- Expansion Board



-  Sim Card Holder
-  High Connectivity
-  Modular
-  Eth Interface
-  Sensor Board
-  USB - Com Port

Product Features

Datasheet	
CPU	Stellaris LM3S9B90, core ARM Cortex-M3 32bit
CPU Speed	Up to 80MHz
Flash	256 KByte
SRAM	96KByte
Real Time Clock	DS1339U with CR1220 Battery
USB	Virtual COM Device Port
Wan Port	GPRS, UMTS, WiFi
RF Port	Module RF Sub 1GHz or 2.4GHz for Local Wireless Networks
EXP UART	Uart Tx, Rx - 3.3V (alternative to USB Virtual Com)
EEPROM	Parameters - 128 bytes
EEPROM	2 x 256Kb Backup remote software update
Ethernet	10/100 Mbps with MAC address
Power Supply	9 to 24 Vdc
PoE Supply	Optional
Battery	Li-ion 3,7V rechargeable
	Li-SoCl2 3,6 V not rechargeable
Dimensions	10 x 15 cm
Temperature Range	[-20°C + 65°C]

Visit www.e-fluctus.com for more information